



## BEFORE YOU BEGIN

Read these instructions completely and carefully. Save these instructions for future use.

### **⚠ WARNING**

**Risk of electric shock.** Disconnect power before servicing or installing Luminaire.

### **⚠ WARNING**

**Risk of injury or damage.** Luminaire will fall if not installed properly. Follow instructions.

### **⚠ WARNING**

**Risk of injury.** Wear safety glasses and gloves during installation and servicing.

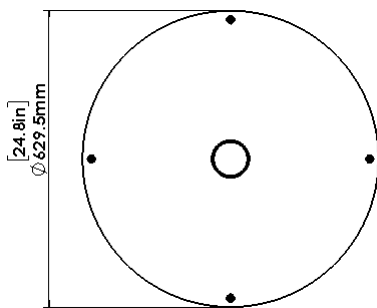
## Important Notice

These instructions are not intended to cover all details or variations in the products nor do these instructions provide for every possible contingency concerning the installation, operations, or maintenance of the luminaire. Should additional information be required, contact Greenstar Products, Inc.

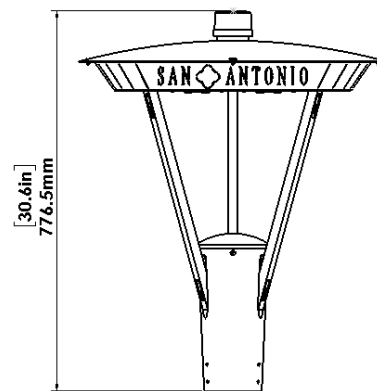
The contents of this manual shall not become a part of or modify any prior or existing agreement, commitment, or relationship. The sales contract contains the entire obligation of Greenstar Products, Inc. Greenstar Products, Inc.'s standard limited warranty is the sole warranty obligation of Greenstar Products, Inc. and any statements contained herein do not create new warranties or modify the existing warranty.

Any electrical or mechanical modifications to the Luminaire without the prior written consent of Greenstar Products, Inc. may void all warranties or other safety certifications. Unauthorized modifications may also result in safety hazards or damage to the luminaire. Misuse of the luminaire could result in injury and equipment damage. In no event will Greenstar Products, Inc. be responsible or liable for direct, indirect, special, or consequential damage or injury that may result from the misuse of the luminaire.

## PRODUCT DIMENSIONS



Top View



Front View

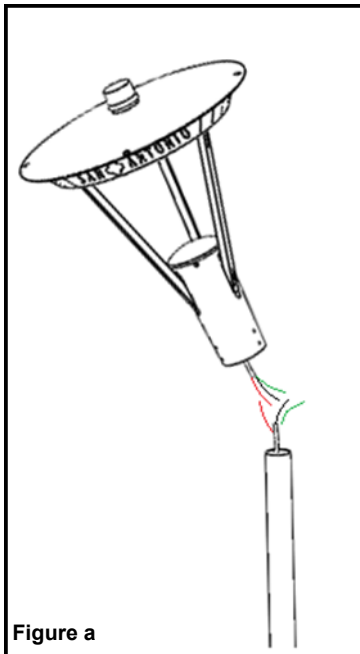


Figure a

## Inspection

- The packaging has been designed to protect the Luminaire from damage during transit. Inspect Luminaire for damage before installation.

## Wiring

- Before mounting the Luminaire on the pole, connect the wiring between the input and output AC connections as follows:

Make the connections as per the color of the three wires

- Connect "Line In" to input supply as per connection description
  - Red Wire = Live or Phase
  - White Wire = Neutral
  - Green Wire = Earth or Base

The most important step is to determine the line voltage. Measure the voltage between all input wires, identify and make note of the color of the phase, neutral, and ground wires.

- Make sure your fixture is rated for the supply line voltage i.e. 100VAC to 277VAC. If there are only two wires then make sure the fixture is properly grounded.
- NOTE: Make sure the Earth wire (Green) is connected. If there is no earth on the supply side then connect the earth wire to an external earth wire. Do not connect earth wire to supply phase wire, this will destroy the fixture and it will not be covered under warranty.

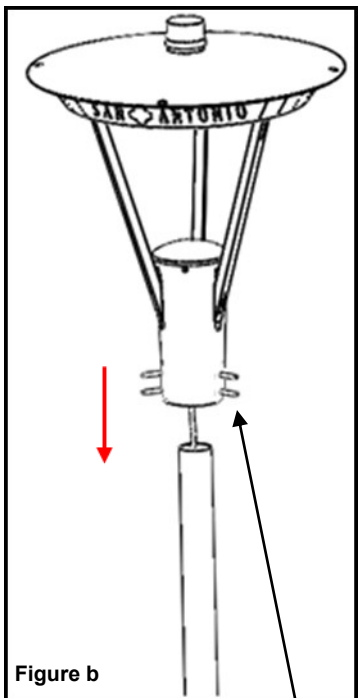


Figure b

Mounting Fastener

## Mounting the Luminaire on the Pole

- Before placing the Luminaire on top of the vertical pole, place all the connectors and cables (which is between I/P and O/P AC Cables) inside the pole so that they do not get squeezed. Also partially remove the mounting fasteners up to the level the pole can go without interfering.
- Once the Luminaire is placed, make sure it is perpendicular to the mounting surface then tighten the fastener up to 35 kgf-cm.

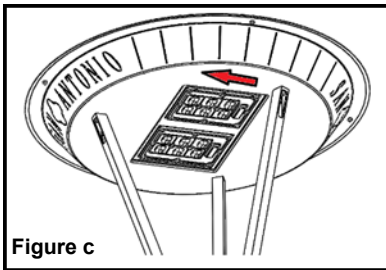


Figure c

### Mounting Direction

- With Type 5 lens Luminaire, place either side in terms of direction towards the road.
- With other lens types the direction of the Luminaire should be in such a way that the connector side (see figure d) of the lens should be towards house side - arrow shows the road side direction (see figure c) .

### Maintenance

- Depending on environmental conditions it may be necessary to clean the lenses in order to maintain a high-efficiency lens. (Use solvent-free cleaners)

### Storage

- Prior to installation, the Luminaire should be placed in a covered, dry storage area. The storage location should not exceed the normal operating temperature of the Luminaire.

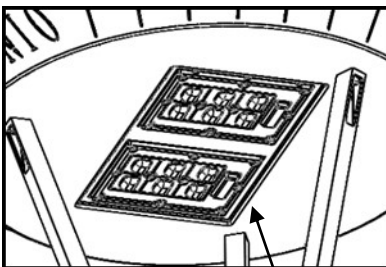


Figure d

Connector Side