



## BEFORE YOU BEGIN

Read these instructions completely and carefully. Save these instructions for future use.

### **⚠ WARNING**

**Risk of electric shock.** Disconnect power before servicing or installing Luminaire.

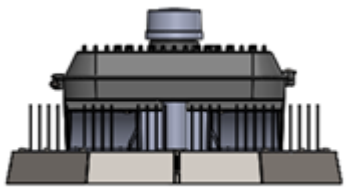
### **⚠ WARNING**

**Risk of injury or damage.** Luminaire will fall if not installed properly. Follow instructions.

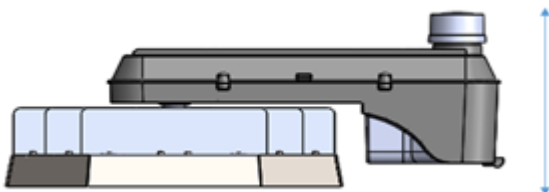
### **⚠ WARNING**

**Risk of injury.** Wear safety glasses and gloves during installation and servicing.

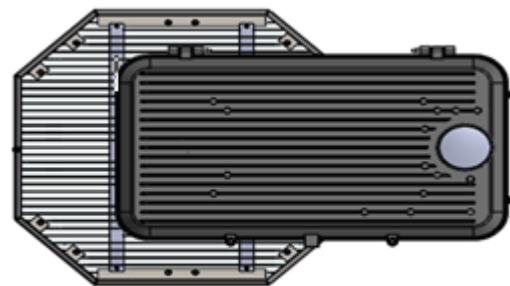
## PRODUCT DIMENSIONS



467.8mm (18.42")



297.36mm (11.71")



696.71mm (27.43")

## Important Notice

These instructions are not intended to cover all details or variations in the products nor do these instructions provide for every possible contingency concerning the installation, operations, or maintenance of the luminaire. Should additional information be required, contact GreenStar Products, Inc.

The contents of this manual shall not become a part of or modify any prior or existing agreement, commitment, or relationship. The sales contract contains the entire obligation of GreenStar Products, Inc. GreenStar Products, Inc.'s standard limited warranty is the sole warranty obligation of GreenStar Products, Inc. and any statements contained herein do not create new warranties or modify the existing warranty.

Any electrical or mechanical modifications to the Luminaire without the prior written consent of GreenStar Products, Inc. may void all warranties or other safety certifications. Unauthorized modifications may also result in safety hazards or damage to the luminaire. Misuse of the luminaire could result in injury and equipment damage. In no event will GreenStar Products, Inc. be responsible or liable for direct, indirect, special, or consequential damage or injury that may result from the misuse of the luminaire.

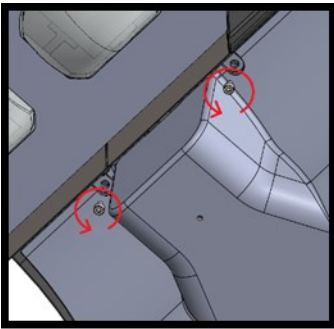


Figure a

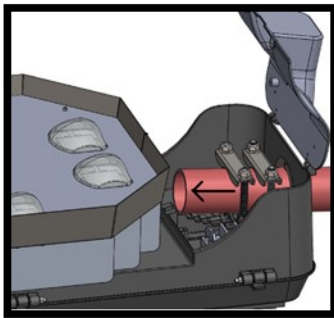


Figure b

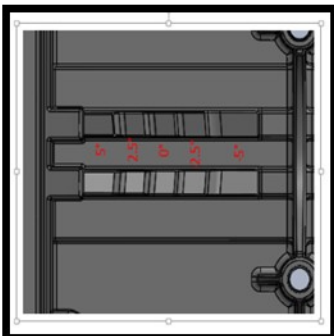


Figure c

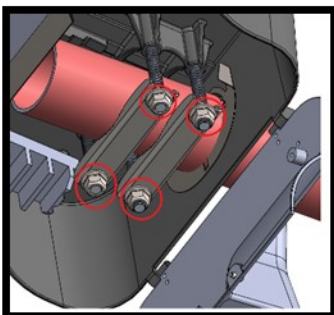


Figure d

## Inspection

- The packaging has been designed to protect the Luminaire from damage during transit. Inspect the Luminaire for damage before installation.

## Mounting the Luminaire on the Pole

- Open the pole mounting compartment by using M6 socket head screws. Do not remove screws completely. (see figure a)
- Slide the Luminaire onto the pole and rest it on the cast leveling steps as required. (see figure b and c) If required, slightly loosen the pole mounting clamps. Meanwhile make sure the bird stopper knockout opening is appropriate for the pole diameter.
- Once the pole is placed in the appropriate location, tighten pole clamp nuts evenly with appropriate torque. (see figure d)
- Wiring
  - NOTE: Make sure all electrical connections are in accordance with the National Electrical Code (NEC) and all applicable local code requirements.
  - Check the rated input voltage on the Luminaire product label and verify that the supply voltage meets the product requirements.
  - Connect the wire to terminal block according to the wiring diagram. (see figure e)

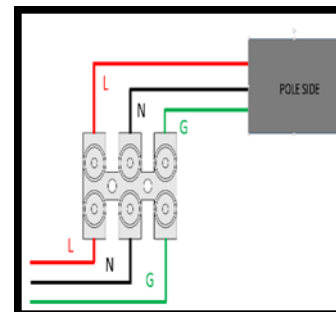


Figure e

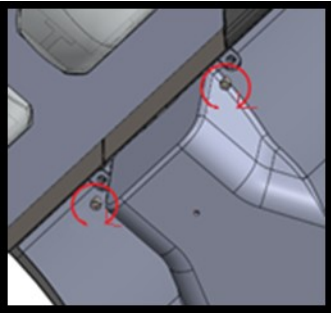


Figure f

### Closure

- After all connections have been made, close the pole mounting compartment door and tighten the fasteners with 8 kgf-cm. Make sure the fasteners are completely tightened. (see figure f)

### Maintenance

- Depending on environmental conditions, it may be necessary to clean the lens in order to maintain the highest efficiency.

### Storage

- Prior to installation, the Luminaire should be placed in a covered, dry storage area. The storage location should not exceed the normal operating temperature of the Luminaire.

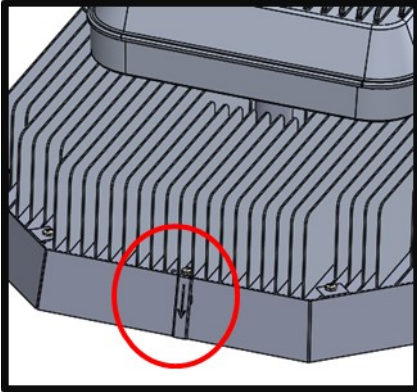


Figure g

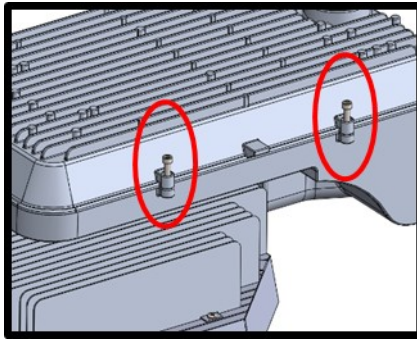


Figure h

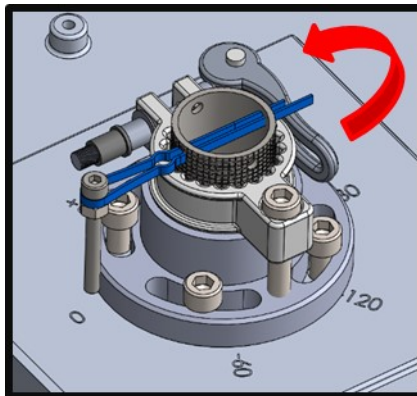


Figure i

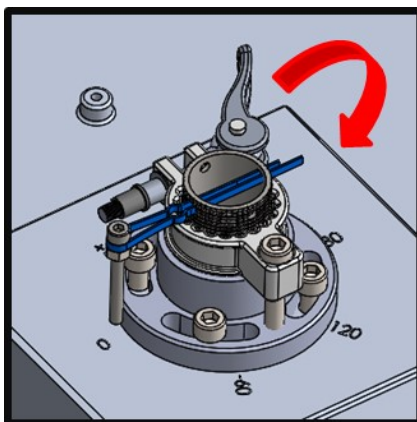


Figure j

## To Adjust the Luminaire Position

- Before adjusting the Luminaire, make sure the position of the street side marking of the heat sink (figure g) if facing down. If the marking is towards the street side or target road side, then the Luminaire position adjustment is not needed.
- If the street side marking is not pointing towards the target, open the PSU top cover fastener partially up to the level until PSU top cover can be opened (figure h).
- Unlock the lever of shaft collar assembly (figure i). Around the shaft collar assembly there are angle markings from 0° to 180° on both sides (clockwise and counterclockwise).
- There is a fastener pointing to the angular markings. If the installer knows the angle to rotate the Luminaire towards the target road, they can rotate with the reference
- Once the tilting is completed, lock the lever like it was before (figure j) and close the PSU top cover. Tighten the cover using the M6X1X20 fasteners using 6kg f-cm torque with a tolerance of +/-1.

## Maintenance

- Depending on environmental conditions, it may be necessary to clean the lens in order to maintain the highest efficiency.

## Storage

- Prior to installation, the Luminaire should be placed in a covered, dry storage area. The storage location should not exceed the normal operating temperature of the Luminaire.