

# CN Series of Municipal Roadway LED Luminaires



## Applications:

GreenStar's newest generation of Residential LED Street and Area Lighting, the CN, offers a sleek modern design weighing less than 7 pounds for models CN2 & CN3 and less than 12 pounds for models CN4 & CN6. It is ideal for 2 and 3 lane local and collector roadways, achieving IESNA RP8 standards up to 170' pole intervals. The performance is equivalent to 70W through 250W High Pressure Sodium (HPS) Luminaires and provides energy savings of 65% or greater. The CN is designed to meet the needs of Municipalities, Utilities, Electric Cooperatives, Parks, Paths, and other Roadway and Area applications.

## Features:

**Construction**—Heavy-duty, corrosion-resistant, low copper, die cast aluminum housing with stainless steel hardware for strength and durability. A powder-coated finish provides excellent resistance to extreme environments.

**LED's**—The CN incorporates high quality, high-efficiency 4100K (70 CRI) or 5700K (75 CRI) LUXEON M LEDs. 3000K available (please inquire for details).

**Electrical**—The Luminaires are available in 100-277V and 347-480V, 50/60Hz. Power Factor of >95%. Total Harmonic Distortion <10%. Exceeding Energy Star requirements, the CN conforms to industry and government performance mandates and standards. Efficacy of 90+ lumens per watt enables the CN to properly manage heat dissipation while enhancing performance and longevity.

**Optics**—Precision-molded optics. Type II, Type III, Type IV, and Type V distributions available. Cutting edge photometric design provides zero light above the horizontal plane/axis delivering optimized uniformity to the illuminated areas.

**LED Rated Life (L75)** - These high quality LED's are rated for approx. 100,000 hours @25°C (77°F) ambient environment per LM-80, TM21.

**Protection/Ingress**—LED and driver compartments are IP66 certified. Surge compartment is IP54 certified.

**Photocontrol Options**—3 pin NEMA receptacle standard and replaceable. 5 and 7 pin receptacle options available.

**Surge Protection**—20kV/10kA (ANSI/IEEE C64.41.2) is standard and replaceable.

**Listings**—ETL, UL, RoHS, CSA, IP66, LM-79, LM80, NEMA, IESNA, ASTM B117, ARRA, NOM, and NAFTA compliant.

## Ordering Table:

Example: CN2421SNDXX

Model	LED Quantity	CCT	Distribution	Voltage	Color	Control Options	Dimming	Option 1	Option 2
CN	2	3 = 3000K*	2 = Type II	1 = multi volt	S = Silver	C = No Photocell Receptacle	X = None	X = None	X = Std. AC Lead
	3	4 = 4100K	3 = Type III	90-285VAC/		N = 3-pin NEMA Receptacle	D = Dimming	F = Full Cut Off	T = Terminal
	4	6 = 5700K	4 = Type IV*	50-60Hz		5 = 5-pin NEMA Receptacle	(0-10vdc)	Shield	Block
	6	*Call factory for details	5 = Type V	4 = 347V-480V*		7 = 7-pin NEMA Receptacle		P = Photocell	G = Gel Connector
			*CN 4/6 Only	* Only available for CN3 & CN6			Z = Shorting Cap		

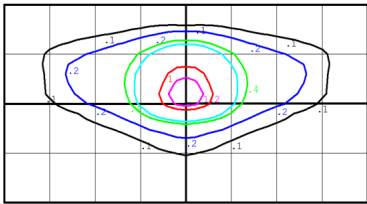
## Accessories:

- CAT# GSSM143M—Full Cut Off Shield



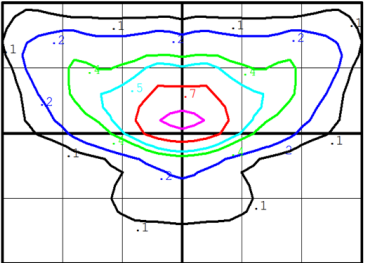
## Photometrics:

CN3, 5700K, Type II Distribution



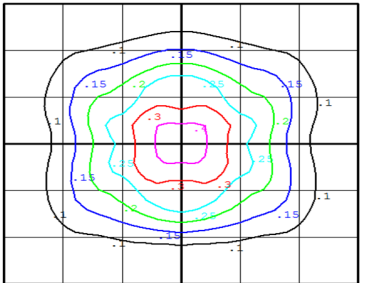
Sample Area 200X100 ft at 25 Height

CN3, 5700K, Type III Distribution



Sample Area 150X100 ft at 25 Height

CN3, 5700K, Type V Distribution



Sample Area 150X150 ft at 25 Height

### Lum. Classification System (LCS)

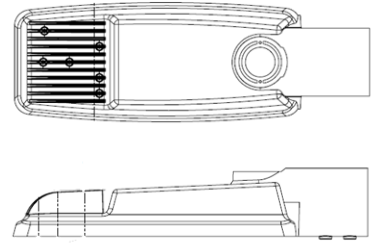
LCS Zone	Lumens	%Lamp	%Lum
FL (0-30)	505.3	N.A.	11.9
FM (30-60)	1668.2	N.A.	39.2
FH (60-80)	914.3	N.A.	21.5
FVH (80-90)	11.9	N.A.	0.3
BL (0-30)	286.4	N.A.	6.7
BM (30-60)	514.8	N.A.	12.1
BH (60-80)	340.4	N.A.	8.0
BVH (80-90)	18.6	N.A.	0.4
UL (90-100)	0.0	N.A.	0.0
UH (100-180)	0.0	N.A.	0.0
Total	4259.9	N.A.	100.0



Cool Splice Connector

Fixture can be ordered with a pig tail instead of a terminal block with pre-terminated TYCO Insulation Displacement IP67 Gel Connectors. Check with your Sales rep for more information.

## Weights/Dimensions:



CN2, CN3

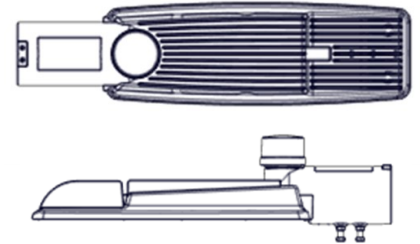
EPA: 0.6 sq. ft.

Length: 17 in. (43.18 cm)

Width: 3.41 in. (8.66 cm)

Height: 3.75 in. (9.53 cm)

Weight: 6.7 lbs.



CN4, CN6

EPA: 0.9 sq. ft.

Length: 25.23in. (64.08 cm)

Width: 6.49 in. ( 16.48 cm)

Height: 4.25 in. (10.8 cm)

Weight: 11.25 lbs.

## Performance Summary:

Model	Input Watts	Input Current (A)			Distribution Type	4100K		5700K	
		120V	240V	277V		Lumens	Efficacy (LPW)	Lumens	Efficacy (LPW)
CN2	28	0.23	0.11	0.10	II III V	2821	101	2860	102
CN3	41	0.33	0.17	0.14	II III V	4231	103	4260	104
CN4	53	0.46	0.23	0.20	II III IV V	5425	102	5465	103
CN6	78	0.66	0.33	0.29	II III IV V	8138	104	8198	105

## Mounting:

A slip fitter mount accepting horizontal arms up to 2.5" OD. Installation and electrical connection is accomplished with easy access mounting bolts.

## Warranty:

5 year standard warranty with a 10 year option available.

\*\*\*Specifications Are Subject To Change Without Notice \*\*\*

\*Specific products are DLC and Lighting Facts certified \*

