



CN Series Municipal Roadway LED Luminaires

GreenStar’s newest generation of Residential LED Street and Area Lighting, the CN, offers a sleek modern design weighing less than 7 pounds for models CN2 & CN3 and less than 12 pounds for models CN4 & CN6. It is ideal for 2 and 3 lane local and collector roadways, achieving IESNA RP8 standards up to 170’ pole intervals. The performance is equivalent to 70W through 250W High Pressure Sodium (HPS) Luminaires and provides energy savings of 65% or greater. The CN is designed to meet the needs of Municipalities, Utilities, Electric Cooperatives, Parks, Paths, and other Roadway and Area applications.

FEATURES:

Construction—Heavy-duty, corrosion-resistant, low copper, die cast aluminum housing with stainless steel hardware for strength and durability. A powder-coated finish provides excellent resistance to extreme environments.

LED’s—The CN incorporates high quality, high-efficiency 4100K (70 CRI) or 5700K (75 CRI) LUXEON M LEDs. 3000K available (please inquire for details).

Electrical—The Luminaires are available in 100-277V and 347-480V, 50/60Hz. Power Factor of >95%. Total Harmonic Distortion <10%. Exceeding Energy Star requirements, the CN conforms to industry and government performance mandates and standards. Efficacy of 90+ lumens per watt enables the CN to properly manage heat dissipation while enhancing performance and longevity.

Optics—Precision-molded optics. Type II, Type III, Type IV, and Type V distributions available. Cutting edge photometric design provides zero light above the horizontal plane/axis delivering optimized uniformity to the illuminated areas.

LED Rated Life (L75) - These high quality LED’s are rated for approx. 100,000 hours @25°C (77°F) ambient environment per LM-80, TM21.

Protection/Ingress—LED and driver compartments are IP66 certified. Surge compartment is IP54 certified.

Photocontrol Options—3 pin NEMA receptacle standard and replaceable. 5 and 7 pin receptacle options available.

Surge Protection—20kV/10kA (ANSI/IEEE C64.41.2) is standard and replaceable.

Vibration Resistance—The RFM meets the ANSI C136.31, American National Standard for Roadway Luminaire Vibration specifications for bridge/overpass applications (tested for 3G over 100,000 cycles by independent lab).

Listings—ETL, RoHS, CSA, IP66, LM-79, LM80, NEMA, IESNA, ASTM B117, ARRA, NOM, and NAFTA compliant.

ORDERING TABLE:

Example: CN2421SNDXX

Model	LED Quantity	CCT	Distribution	Voltage	Color	Control Options	Dimming	Option 1	Option 2
CN	2	3 = 3000K*	2 = Type II	1 = multi volt	S = Silver	C = No Photocell Receptacle	X = None	X = None	X = Std. AC Lead
	3	4 = 4100K	3 = Type III	90-285VAC/		N = 3-pin NEMA Receptacle	D = Dimming	H = House	T = Terminal
	4	6 = 5700K	4 = Type IV*	50-60Hz		5 = 5-pin NEMA Receptacle	(0-10vdc)	Side Shield	Block
	6	*Call factory For Details	5 = Type V *CN 4/6 Only			7 = 7-pin NEMA Receptacle		P = Photocell Z = Shorting Cap	G = Gel Connector C = Camera * Camera option not available for CN2, CN3

ACCESSORIES:

Full Cut Off Shield—CAT# GSSM143M

MOUNTING:

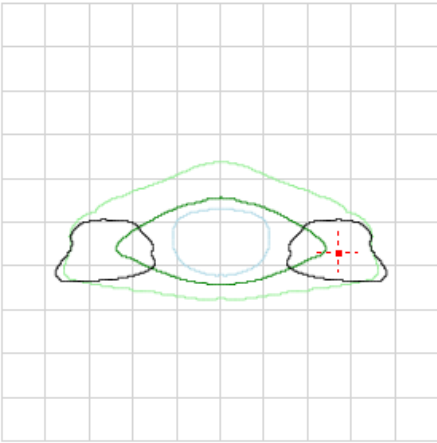
A slip fitter mount accepting horizontal arms up to 2.5” OD. Installation and electrical connection is accomplished with easy access mounting bolts.



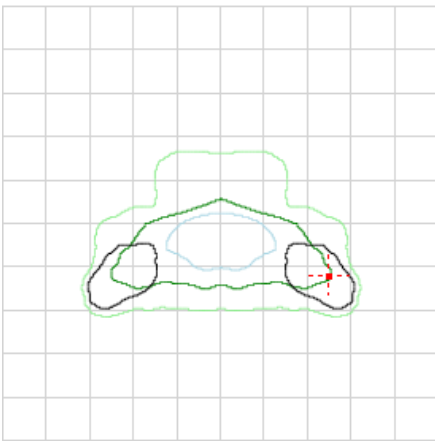
* CN4/CN6 pictured * CN2/CN3 pictured above

PHOTOMETRICS:

CN3, 4K, Type 2 Distribution Mounted at 20 ft.



CN3, 4K, Type 3 Distribution Mounted at 20 ft.



LCS TABLE

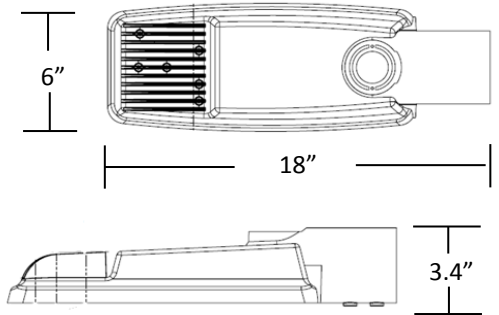
BUG RATING	B1 - U0 - G1	
FORWARD LIGHT	LUMENS	LUMENS %
LOW(0-30):	502.0	11.9%
MEDIUM(30-60):	1,656.9	39.2%
HIGH(60-80):	908.0	21.5%
VERY HIGH(80-90):	11.7	0.3%
BACK LIGHT		
LOW(0-30):	284.3	6.7%
MEDIUM(30-60):	511.2	12.1%
HIGH(60-80):	338.1	8%
VERY HIGH(80-90):	18.4	0.4%
UPLIGHT		
LOW(90-100):	0.000	0%
HIGH(100-180):	0.000	0%
TRAPPED LIGHT:	0.000	0%

LCS TABLE

BUG RATING	B1 - U0 - G1	
FORWARD LIGHT	LUMENS	LUMENS %
LOW(0-30):	358.0	8.7%
MEDIUM(30-60):	1,547.5	37.5%
HIGH(60-80):	1,224.1	29.7%
VERY HIGH(80-90):	10.0	0.2%
BACK LIGHT		
LOW(0-30):	212.7	5.2%
MEDIUM(30-60):	495.0	12%
HIGH(60-80):	262.8	6.4%
VERY HIGH(80-90):	12.0	0.3%
UPLIGHT		
LOW(90-100):	0.000	0%
HIGH(100-180):	0.000	0%
TRAPPED LIGHT:	0.1	0%

WEIGHTS/DIMENSIONS:

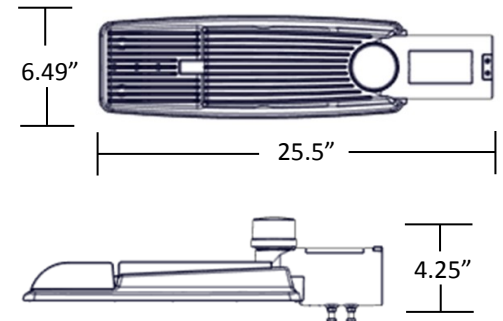
CN2 & CN3



EPA: 0.6 sq. ft.

Weight: 6.7 lbs.

CN4 & CN6



EPA: 0.9 sq. ft.

Weight: 11.5 lbs.

PERFORMANCE SUMMARY:

Model	Input Watts	Input Current (A)			Distribution Type	4100K		5700K	
		120V	240V	277V		Lumens	Efficacy (LPW)	Lumens	Efficacy (LPW)
CN2	28	0.23	0.11	0.10	II III V	2870	103	2890	103
CN3	41	0.33	0.17	0.14	II III V	4231	103	4260	104
CN4	53	0.46	0.23	0.20	II III IV V	5399	102	5439	103
CN6	78	0.66	0.33	0.29	II III IV V	8099	104	8159	105

WARRANTY:

Standard 10 year warranty.



***Specifications Are Subject To Change Without Notice ***

APR2019