

# DS Series Security LED Luminaires



The DS Series Luminaire is designed as a direct upgrade replacement for traditional dusk-to-dawn security light units. The Luminaire offers easy mounting and compatibility to standard ANSI refractor/reflector assemblies. The rugged, corrosion-resistant, die-cast aluminum housing is outfitted with stainless steel hardware and an epoxy coating that offers an extremely long service life and excellent weather resistance. The DS offers multiple light distribution options to improve the visual experience for your specific application. While not commonly available on traditional HID or competing LED products, the DS offers a full line of roadway distribution patterns.

## FEATURES:

**Construction**—The DS series is designed with rugged, corrosion-resistant, die cast aluminum housing with stainless steel hardware standard for durability and strength. An epoxy powder-coated finish provides excellent resistance to weathering, fading, and corrosion.

**LED's**—The DS incorporates advanced high-efficiency 4100K (70CRI) or 5700K (75CRI) components for roadway distribution patterns or Chip-On Board (COB) technology for traditional style Type V distribution patterns. Each provides optimized light delivery to uniformly illuminate target areas. 3000K available (please inquire for additional details).

**Electrical**—Available in 100-277V at 50/60Hz. Power Factor of >95%. Total Harmonic Distortion (THD) is <10%. Exceeding Energy Star requirements, the DS conforms to a majority of roadway, co-operative, and municipal government performance mandates and standards. Efficacy of 100+ lumens per watt enables the DS to properly manage heat dissipation while enhancing performance and longevity.

**Optics**—Precision-molded optics available in Type II, III, IV, and V distribution patterns. Cutting edge photometric design achieves full cutoff when not using a refractor assembly.

**LED Rated Life (L75)** - These high quality LED's are rated for >100,000 hours @ 25°C (77°F) ambient environment per LM-80, TM21.

**Protection/Ingress**—LED compartment is IP66 rated. Drivers are IP67 rated and mounted in an IP54 rated compartment.

**Photocontrol Options**—3 pin ANSI receptacle is standard.

**Secondary Surge Protection**—6kV/3kA is standard, 20kV/10kA (ANSI/IEEE C64.41.2) is optional and easily replaceable.

**Listings**—ETL, CSA, LM79, LM80, NEMA, IESNA, ASTM B117, ARRA and NAFTA compliant. NOM 31 design conformance.

## ORDERING TABLE:

Example: DS4621SPBGLX

Model	LED	CCT	Distribution	Voltage	Color	Control Options	Surge Arrestor	Connectors	Lead	Option 1
DS	1	4 = 4100K	2	1 = 277V	S = Silver	N = 3-pin ANSI	A = Littelfuse Serial	G = Gel Connectors	L = 5' AC Lead	X = None
	4	5* = 5000K	3			P* = Photocell	B = GS Serial	T = Terminal Block	X* = None	
	6	6 = 5700K	4			Z = Shorting Cap	P* = GS Parallel	X* = Std AC Lead		
			5*							

\* 5000K CCT Std for DS1 only. Not available for DS4 or DS6

\* Type 5 lens distribution std for DS1 only. Not available for DS4 or DS6

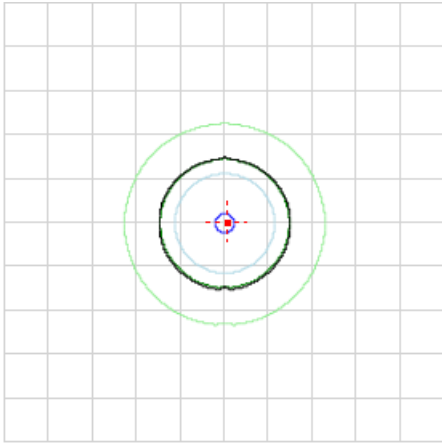
## ACCESSORIES:

- Small Acrylic Refractor—CAT# GSPL63M
- ANSI Standard Refractor
- Std. 18" Pole Arm—CAT# GSAC59M

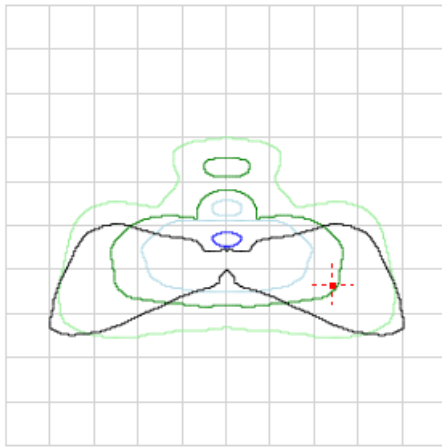


## PHOTOMETRICS:

DS1, 5K, Type 5 Distribution Mounted at 20 ft.



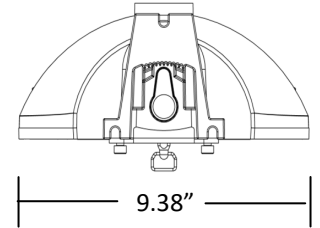
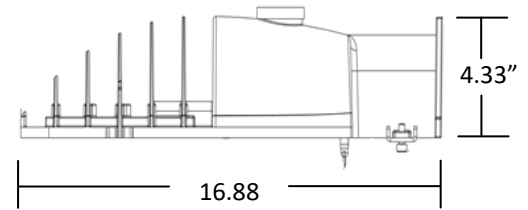
DS6, 6K, Type 3 Distribution Mounted at 20 ft.



LCS TABLE		
BUG RATING	B2 - U0 - G0	
<b>FORWARD LIGHT</b>	LUMENS	LUMENS %
LOW(0-30):	863.2	14.6%
MEDIUM(30-60):	1,649.0	27.9%
HIGH(60-80):	457.5	7.8%
VERY HIGH(80-90):	8.7	0.1%
<b>BACK LIGHT</b>		
LOW(0-30):	859.5	14.6%
MEDIUM(30-60):	1,632.6	27.7%
HIGH(60-80):	425.9	7.2%
VERY HIGH(80-90):	5.9	0.1%
<b>UPLIGHT</b>		
LOW(90-100):	0.000	0%
HIGH(100-180):	0.000	0%
<b>TRAPPED LIGHT:</b>	0.000	0%

LCS TABLE		
BUG RATING	B1 - U0 - G2	
<b>FORWARD LIGHT</b>	LUMENS	LUMENS %
LOW(0-30):	973.5	11.6%
MEDIUM(30-60):	3,395.2	40.5%
HIGH(60-80):	2,434.8	29%
VERY HIGH(80-90):	75.8	0.9%
<b>BACK LIGHT</b>		
LOW(0-30):	294.0	3.5%
MEDIUM(30-60):	715.6	8.5%
HIGH(60-80):	458.5	5.5%
VERY HIGH(80-90):	36.9	0.4%
<b>UPLIGHT</b>		
LOW(90-100):	0.000	0%
HIGH(100-180):	0.000	0%
<b>TRAPPED LIGHT:</b>	0.3	0%

## WEIGHTS/DIMENSIONS:



EPA: 0.57 sq. ft.

Weight: 6.5 lbs.

## PERFORMANCE SUMMARY:

Model	Input Watts	Input Current (A)			Distribution Type	4100K		5700K	
		120V	240V	277V		Lumens	Efficacy (LPW)	Lumens	Efficacy (LPW)
DS1 (Retail Model)	55	0.46	0.23	0.20	5			6,099*	111
DS4	53	0.46	0.23	0.20	2 3 4 5	5,512	104	5,565	105
DS6	78	0.66	0.33	0.29	2 3 4 5	8,279	106	8,348	107

\*DS1 CCT=5000K

## MOUNTING:

Wall Mount or Tenon Mount

## WARRANTY:

Standard 10 year warranty



Wall Mount



Tenon Mount



\*\*\* Specifications Are Subject To Change Without Notice \*\*\*

JAN2019