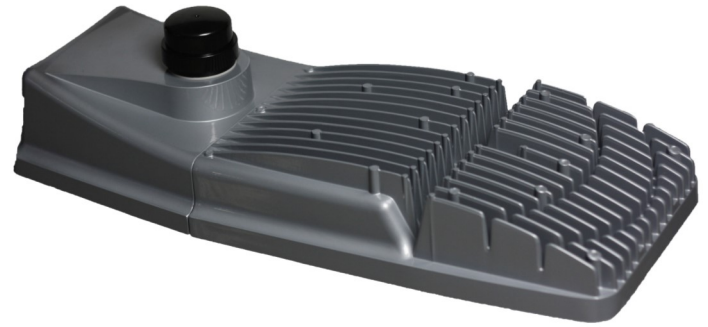


AV Series of Roadway & Area LED Luminaires



Applications:

The AV LED Luminaire is GreenStar's second generation utility grade Luminaire. Designed to perform in both demanding Roadway and Area Lighting projects. It is ideal for both retrofit and new construction and has a sleek, modern, architecturally pleasing design. An area arm is available for parking lots, auto dealerships, and other area lighting designs where aesthetics are important. This innovative design produces light output equivalent to a 250W—750W HID and provides energy savings of 65% or greater.

Features:

Construction—The AV series is designed with rugged, corrosion-resistant, die cast aluminum housing with stainless steel hardware for durability and strength. An epoxy powder-coated finish provides excellent resistance to outdoor conditions.

LED's—The AV incorporates advanced high-efficiency Philips Lumiled Luxeon M 4100K (70CRI) or 5700K (75CRI) components providing optimized combinations of light delivery to uniformly illuminate target areas.

Electrical—Available in 100-277V or 347-480V at 50/60Hz. Power Factor of >95%. Total Harmonic Distortion (THD) is <10%. Exceeding Energy Star requirements, the AV conforms to industry, DOT, and government performance mandates and standards. Efficacy of 90+ lumens per watt enables the AV to properly manage heat dissipation while enhancing performance and longevity.

Optics—Precision-molded, optics available in Type II, III, IV, and V distribution patterns. Cutting edge photometric design achieves full cutoff with zero light above the horizontal plane/axis.

LED Rated Life (L75) - These high quality LED's are rated for approx. 100,000 hours @ 25°C (77°F) ambient environment per LM-80, TM21.

Protection/Ingress—LED and PSU compartments are IP66 rated. Surge Arrestor compartment is IP54 rated.

Photocontrol Options—3 pin NEMA receptacle is standard with available 7 pin receptacle.

Surge Protection—20kV/10kA (ANSI/IEEE C64.41.2) is standard and replaceable.

Listings—ETL, UL, CSA, LM79, LM80, NEMA, IESNA, ASTM B117, DLC, Dark Sky, ARRA and NAFTA compliant. NOM design conformance.

Designed to meet DOT Specifications!

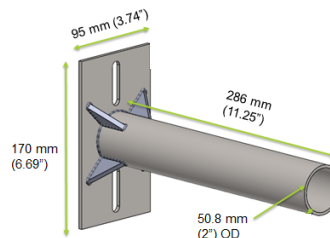
Ordering Table:

Example: XAVX12431SNXXI

Model	LED Quantity	CCT	Distribution	Voltage	Color	Control Options	Dimming	Option1	Option 2
XAVX = Roadway Arm 277V	08	4 = 4100K	2 = Type II	1 = 100-277V	S = Silver	C = No Photocell Receptacle	X = None	X = None	X = None
XAVH = Roadway Arm 480V	12	6 = 5700K	3 = Type III	50-60 Hz	R = Bronze	N = 3-pin NEMA Receptacle	D = Dimming	H = House	B = Bubble Level
AAVX = Area Arm 277V	16		4 = Type IV	4 = 347V-480V		7 = 7-pin NEMA Receptacle	(0-10vdc)	Side Shield	I = Inclinator
AAVH = Area Arm 480V	20		5 = Type V	50-60Hz				P = Photocell	
	24							Z = Shorting Cap	

Mounting:

Four bolt/two bracket slip-fitter mounting with built-in tenon stop and step levels accepting horizontal arms up to 2.5" OD. Bubble level available for simple leveling at time of installation. Inclinator available for DOT applications. Side tenon arm included with AAVX16, 20, & 24 and AAVH16, 20, & 24 models.

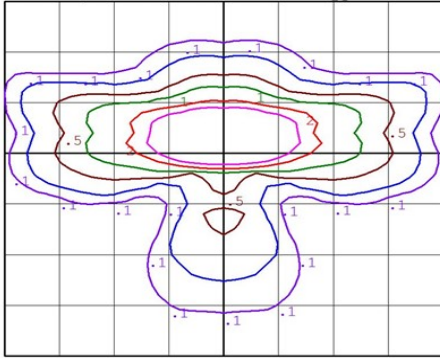


Accessories:

- CAT# Inclinator—DOT inclinator
- CAT# GSSM126M—Side Tenon Arm

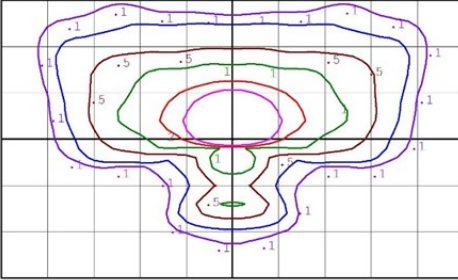
Photometrics:

XAVX20, 4100K, Distribution Type II



Sample Area 200ft X175ft, 25 ft Height

XAVX20, 4100K, Distribution Type III



Sample Area 250ft X150ft, 25 ft Height

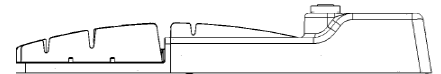
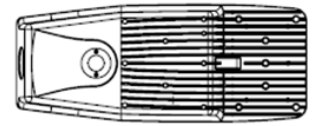
Lum Classification System (LCS)

LCS Zone		Lumens	%Lamp	%Lum
FL	(0-30)	3820.4	N.A.	15.9
FM	(30-60)	9679.3	N.A.	40.3
FH	(60-80)	4340.9	N.A.	18.1
FVH	(80-90)	101.4	N.A.	0.4
BL	(0-30)	1250.9	N.A.	5.2
BM	(30-60)	2240.1	N.A.	9.3
BH	(60-80)	2448.6	N.A.	10.2
BVH	(80-90)	161	N.A.	0.7
UL	(90-100)	0.0	N.A.	0.0
UH	(100-180)	0.0	N.A.	0.0
Total		24042.6	N.A.	100.0

Lum Classification System (LCS)

LCS Zone		Lumens	%Lamp	%Lum
FL	(0-30)	2860.7	N.A.	12.0
FM	(30-60)	822.7	N.A.	36.9
FH	(60-80)	7364.0	N.A.	30.8
FVH	(80-90)	174.4	N.A.	0.7
BL	(0-30)	924.6	N.A.	3.9
BM	(30-60)	2105.0	N.A.	8.8
BH	(60-80)	1482.9	N.A.	6.2
BVH	(80-90)	179.0	N.A.	0.7
UL	(90-100)	0.0	N.A.	0.0
UH	(100-180)	0.0	N.A.	0.0
Total		23913.3	N.A.	100.0

Weights/Dimensions:



AV08, AV12

EPA: 1.1 sq. ft.

Length: 25 in. (63.5 cm)

Width: 10 in. (25.4 cm)

Height: 6.4 in. (16.25 cm)

Weight: 20 lbs.

AV20, AV16, AV24

EPA: 1.3 sq. ft.

Length: 36.5 in. (92.71 cm)

Width: 13 in. (33.02 cm)

Height: 5.5 in. (13.97 cm)

Weight: 38.5 lbs.

Performance Summary:

Model	Input Watts	Input Current (A)			Distribution Type	4100K		5700K	
		120V	240V	277V		Lumens	Efficacy (LPW)	Lumens	Efficacy (LPW)
AV08	103	0.86	0.43	0.37	II	10,690	103	10,770	104
					III				
					IV				
					V				
AV12	156	1.30	0.65	0.56	II	16,085	103	16,205	104
					III				
					IV				
					V				
AV16	169	1.46	0.70	0.61	II	19,234	114	19,394	115
					III				
					IV				
					V				
AV20	214	1.78	0.89	0.77	II	24,043	112	24,243	113
					III				
					IV				
					V				
AV24	268	2.23	1.11	0.96	II	28,851	107	29,091	108
					III				
					IV				
					V				

Warranty:

5 year standard warranty with a 10 year option available.

*** Specifications Are Subject To Change Without Notice ***



- Greenstar Products, Inc.
- 6900 Alamo Downs Pkwy
- San Antonio, TX 78238
- 877-877-1411
- www.greenstarled.com