



## How To Connect to Camera Using Desktop Computer or Laptop

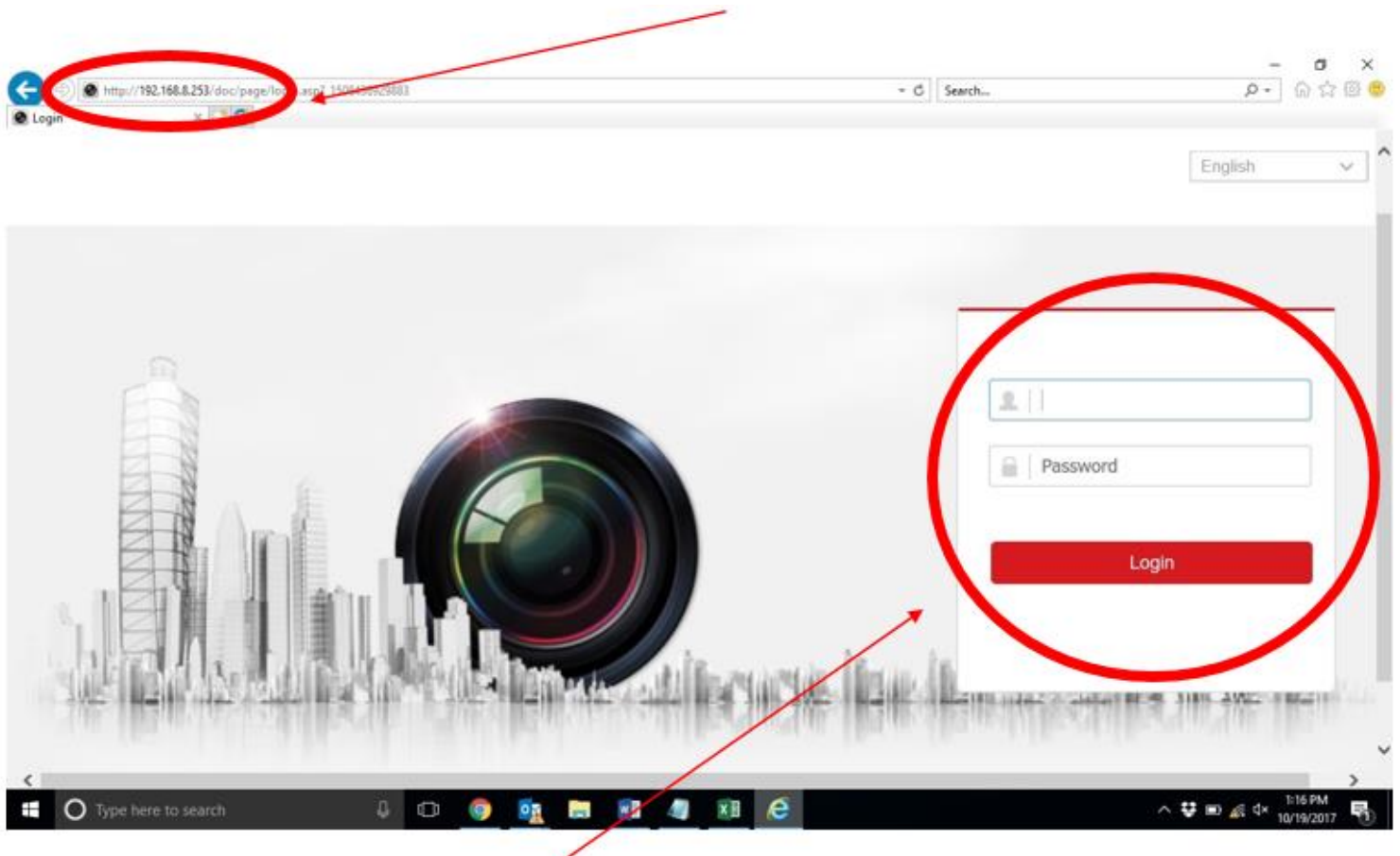
1. Install power to the camera

Ground—Green Wire, Neutral—White Wire, Hot—Red Wire

2. Connect to Hotspot by connecting to your computer's Wi-Fi and selecting the 9 digit Wi-Fi access point. This is the serial number of the camera. Please note that it could take up to a minute for the network to register the camera.

Hotspot Password: 9-digit serial number of the camera

3. Using Internet Explorer, type the IP address 192.168.8.253 into the URL bar and hit ENTER. This will take you to the camera user platform.

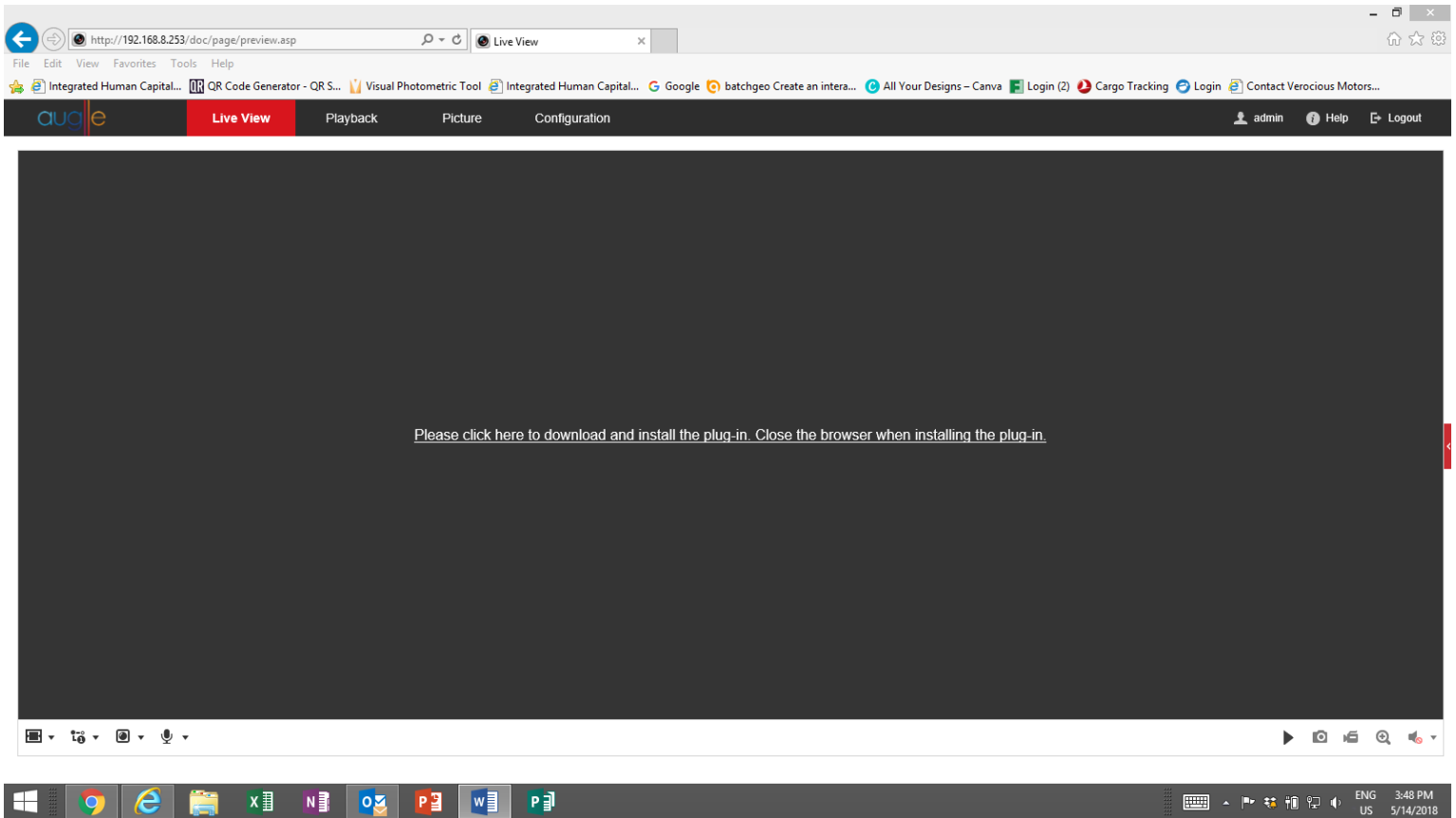


4. Login

Username: admin

Password: 9-digit serial number of the camera

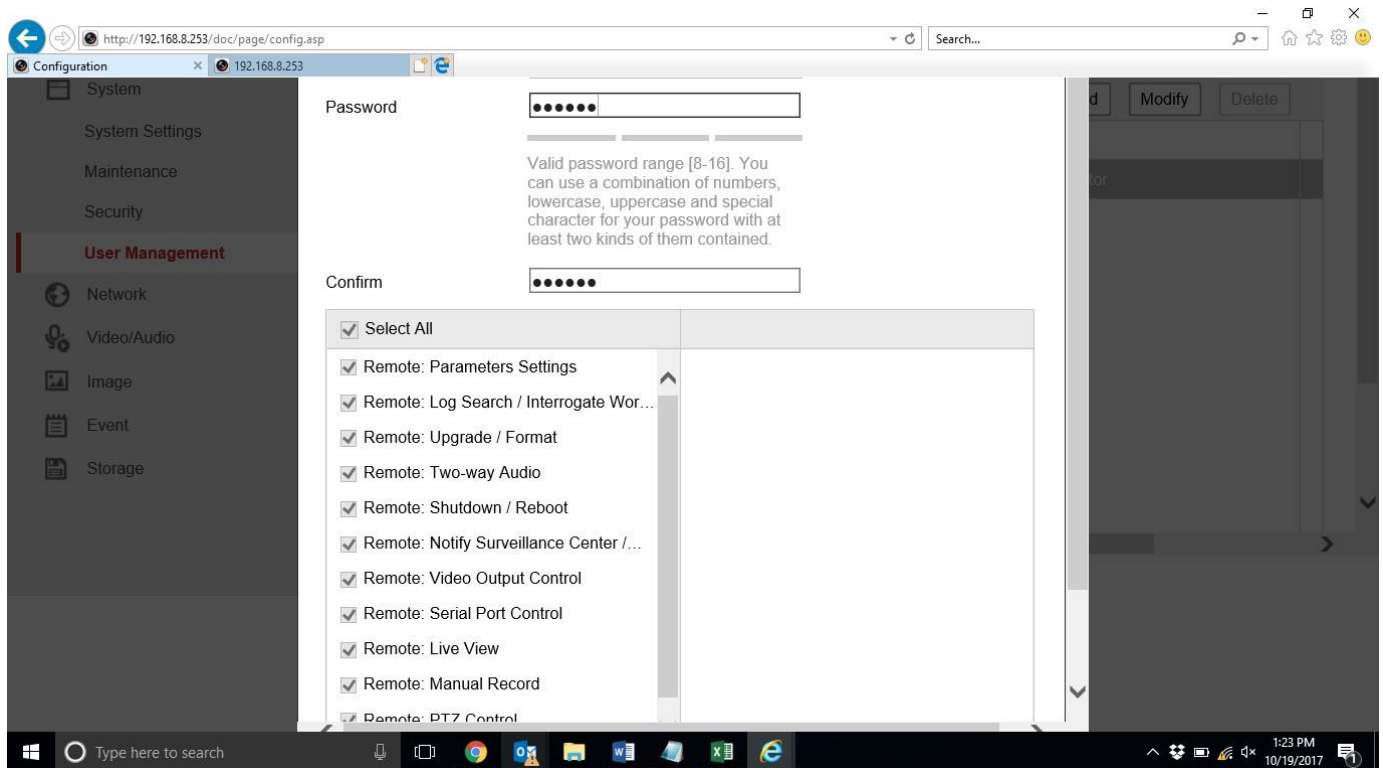
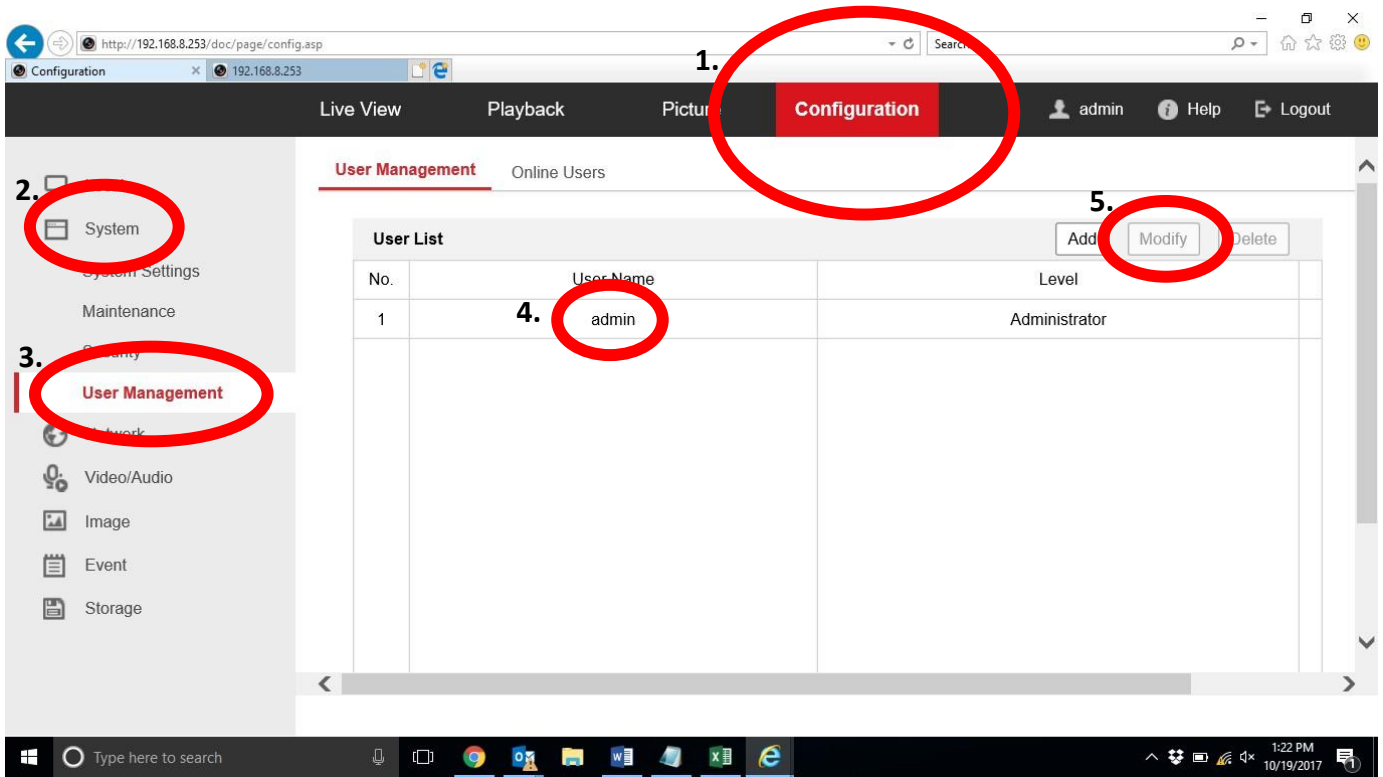
5. You will be prompted to create a new password and setup security questions
6. Download and install plug-in



7. You can now live view the camera
  - See User Manual of Network Camera for viewing and setting options
  - Shipped camera model is set to record 24/7 with auto rewrite enabled.
8. To view instructional videos, visit [www.auglle.com/portfolio/av-lite/](http://www.auglle.com/portfolio/av-lite/)

## How To Change Password Within User Platform

1. Click Configuration tab
2. Click System tab on the left side of the screen
3. Click User Management in the drop-down menu
4. Click admin in the user list
5. Click Modify once admin is highlighted



6. Change password

7. Click OK once the password has been changed and confirmed

