



IP LITE Luminaire and IP Camera

The IP LITE integrates HD quality IP security camera with GreenStar LED Luminaire technology, providing safety and security for a wide variety of applications including parking lots, industrial facilities, schools, or public areas where lighting and security are necessary. The IP LITE provides real-time or recorded video surveillance through Ethernet or Wi-Fi network connectivity. In areas where network connectivity is unavailable, its inclusive personal Hot Spot feature allows for encrypted recorded video to be viewed and retrieved from up to 30 meters from point of installation via laptop, tablet, or smartphone. The IP LITE is a true rapid deployment, plug-and-play safety and security solution.

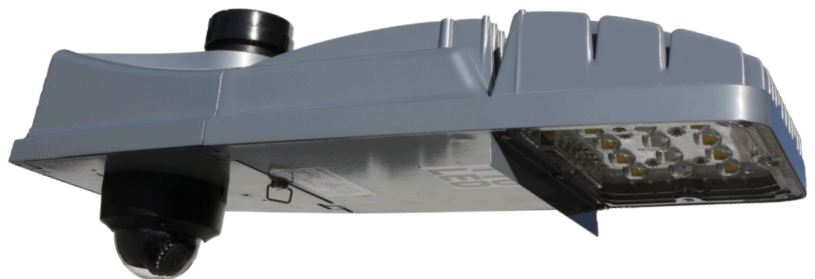


Features:

- Up to 2 megapixel high resolution
- Dual Stream
- 2.0mm fixed lens
- 115° or 56° Field of View
- 120dB Wide Dynamic Range
- 3D Digital Noise Reduction
- 3-axis manual adjustment
- Support on-board storage, 64GB included (up to 128GB)
- DC12V & PoE
- Support H.264+
- IP67 weather-proof protection
- IK10
- Built-in Wi-Fi or Hot Spot

Warranty:

- Standard 2 year warranty on camera
- Standard 10 year warranty on luminaire



Pictured with a GreenStar AV12 Series Roadway Fixture

Luminaire Specifications: Please see AV Series Specification Sheet

IP Camera Specifications:

Camera	
Image Sensor	1/2.8" Progressive Scan CMOS
Min. Illumination	0.01Lux @ (F1.2, AGC ON)
Shutter Speed	1/3 s to 1/100,000 s
Lens	2.8mm (115°) fixed lens field of view or 6.0mm (56°) fixed lens field of view
Wide Dynamic Range	120dB
P&T Rotation	Pan: 0° ~ 355°, Tilt: 0° ~ 75°, Rotation: 0° ~ 355°
Day & Night	IR Cut Filter with Auto Switch
Compression Standard	
Video Compression	H.264 / MJPEG / H.264+
H.264 Type	Main Profile
Video Bit Rate	32 Kbps ~ 16 Mbps
Dual Streams	Support
Image	
Max. Resolution	1920 x 1080
Max Frame Rate	50 Hz: Main Stream: 25fps (1920x1080), 25fps (1280x960), 25fps (1280x720), Sub Stream: 25fps (352x288), 25fps (640x360) 60 Hz: Main Stream: 30fps (1920x1080), 30fps (1280x960), 30fps (1280x720), Sub Stream: 30fps (352x240), 30fps (640x360)
Image Setting	Rotate Mode, Saturation, Brightness, Contrast, Sharpness adjustable by client software or web browser
BLC	Support, Zone Configurable
ROI Codec	Support
Network	
Network Storage	NAS (Support NFS, SMB/CIFS), ANR
Detection	Intrusion Detection, Line Crossing Detection, Motion Detection, Dynamic Analysis
Alarm Trigger	Tampering Alarm, Network Disconnect, IP Address Conflict, Storage Exception
Protocols	TCP/IP, UDP, ICMP, HTTP, HTTPS, FTP, DHCP, DNS, DDNS, RTP, RTSP, RTCP, PPPoE, NTP, UPnP, SMTP, SNMP, IGMP, 802.1X, QoS, IPv6, Bonjour
General Function	One-Key Reset, Anti-Flicker, Heartbeat, Mirror, Password Protection, Privacy Mask, Watermark, IP Address Filtering Anonymous Access
Standard	ONVIF (PROFILE S, PROFILE G), PSIA, CGI, ISAPI
Interface	
Communication Interface	1 RJ45 10M/100M Ethernet Port
On-Board Storage	Built-In Micro SD/SDHC/SDXC Slot, Up to 128 GB
Reset	Yes
Wi-Fi/Hot Spot	
Wireless Standards	IEEE802.11b, 802.11g, 802.11n
Frequency Range	2.4 GHz ~ 2.4835 GHz
Channel Bandwidth	20/40MHz Support
Protocols	802.11b: CCK, QPSK, BPSK, 802.11g/n: OFDM
Security	64/128-bit WEP, WPA/WPA2, WPA-PSK/WPA2-PSK, WPS
Transfer Rates	11b: 11Mbps, 11g: 54Mbps, 11n: up to 150Mbps
Wireless/Hot Spot Range	50 meters *The performance varies based on actual environment
General	
IR Range	Approx. 30 meters
Operating Conditions	(-)30°C - 60° (-22°F - 140° F), Humidity 95% or less (non-condensing)
Power Supply	DC12V +/- 25%, PoE (802.3af Class 3), *** CAMERA NOT SUPPORTED BY OUR 480V LUMINAIRES ***
Power Consumption	Max. 5W
Dimensions	Φ 111 x 82 (4.4" x 3.2")
Weight	500g (1.1 lbs)