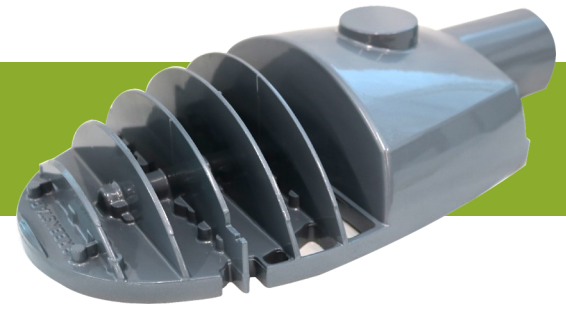


DS Mini Series Security LED Luminaires



The DSM Series Luminaire is designed as a direct upgrade replacement for traditional dusk-to-dawn security light units. The small rugged, corrosion-resistant, die-cast aluminum housing is outfitted with stainless steel hardware and an aesthetically pleasing epoxy coating that offers an extremely long service life and excellent weather resistance. The DSM offers multiple light distribution options to improve the visual experience for your specific application. While not commonly available on traditional HID or competing LED products, the DSM offers a full line of pathway distribution patterns.

FEATURES:

Construction—The DSM series is designed with rugged, corrosion-resistant, die cast aluminum housing with stainless steel hardware standard for durability and strength. An epoxy powder-coated finish provides excellent resistance to weathering, fading, and corrosion.

LED's—The DSM incorporates advanced high-efficiency (70CRI) components for roadway distribution patterns. Each pattern provides optimized light delivery to uniformly illuminate target areas.

Electrical—Available in 100-277V at 50/60Hz. Power Factor of >95%. Total Harmonic Distortion (THD) is <15%. Exceeding Energy Star requirements, the DSM conforms to a majority of roadway, co-operative, and municipal government performance mandates and standards. Efficacy of 110+ lumens per watt enables the DSM to properly manage heat dissipation while enhancing performance and longevity.

Optics—Precision-molded optics available in Type I and II distribution patterns. Cutting edge photometric design achieves full cut off.

LED Rated Life (L75) - These high-quality LED's are rated for >100,000 hours @ 25°C (77°F) ambient environment per LM-80, TM21.

Protection/Ingress—LED compartment is IP66 rated. Drivers are IP67 rated and mounted in an IP54 rated compartment.

Photo control Options—3 pin ANSI receptacle is standard.

Secondary Surge Protection—20kV/10kA (ANSI/IEEE C64.41.2) is optional and easily replaceable.

Listings—ETL, CSA, LM79, LM80, NEMA, IESNA, ASTM B117, ARRA NOM, PAESE and NAFTA compliant.

ORDERING TABLE:

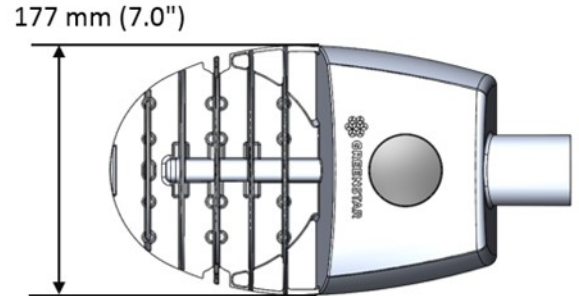
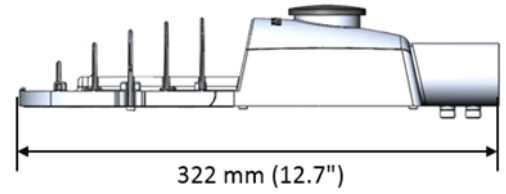
Example: DSM0831SNA

Model	LED	CCT	Distribution	Voltage	Color	Control Options	Surge Arrestor
DSM	08	3 = 3000K 4 = 4000K	1 = IESNA Type I 2 = IESNA Type II Wide	1 = 277V	S = Silver	N = 3-pin NEMA Receptacle P = Photocell	A = Littelfuse Serial P = GS Parallel

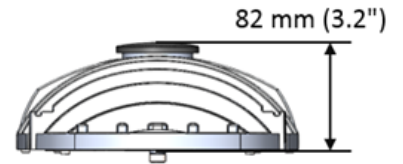
PHOTOMETRICS:

DSM08, Type II Distribution

WEIGHTS/DIMENSIONS:



EPA: 0.37 sq. ft.
 Length: 12.7 in. (35.6 cm)
 Width: 7.0 in. (19.6 cm)
 Height: 3.2 in. (8.0 cm)
 Weight: 3.3 lbs



DSM08, Type I Distribution

BUG RATING: B1-U0-G1



Fixture comes standard with a pig tail which has pre-terminated TYCO Insulation Displacement IP67 Gel Connectors.

PERFORMANCE SUMMARY:

Model	Input Watts	Input Voltage	Input Current (A)		4000K		5700K	
			120V	240V	Lumens	Efficacy (LPW)	Lumens	Efficacy (LPW)
DSM 08	38	100—277	0.33	0.17	5,108	134	5,363	141

MOUNTING:

Tenon Mount with Pole diameter 1.85", pole insertion length 2.2"

WARRANTY:

Standard 10 year warranty



*** Specifications Are Subject To Change Without Notice ***

May 2020